



Focus on Exploration and Development in a Prolific District

- 100%-owned Empire State Mine (“ESM”) – zinc production in a historic mining district in New York State
- Part of the Augusta Group – strong track record in exploration and development
- Driven by best-in-class leadership

3,800 tpd shaft and major surface infrastructure



Drilling at ESM #4 mine



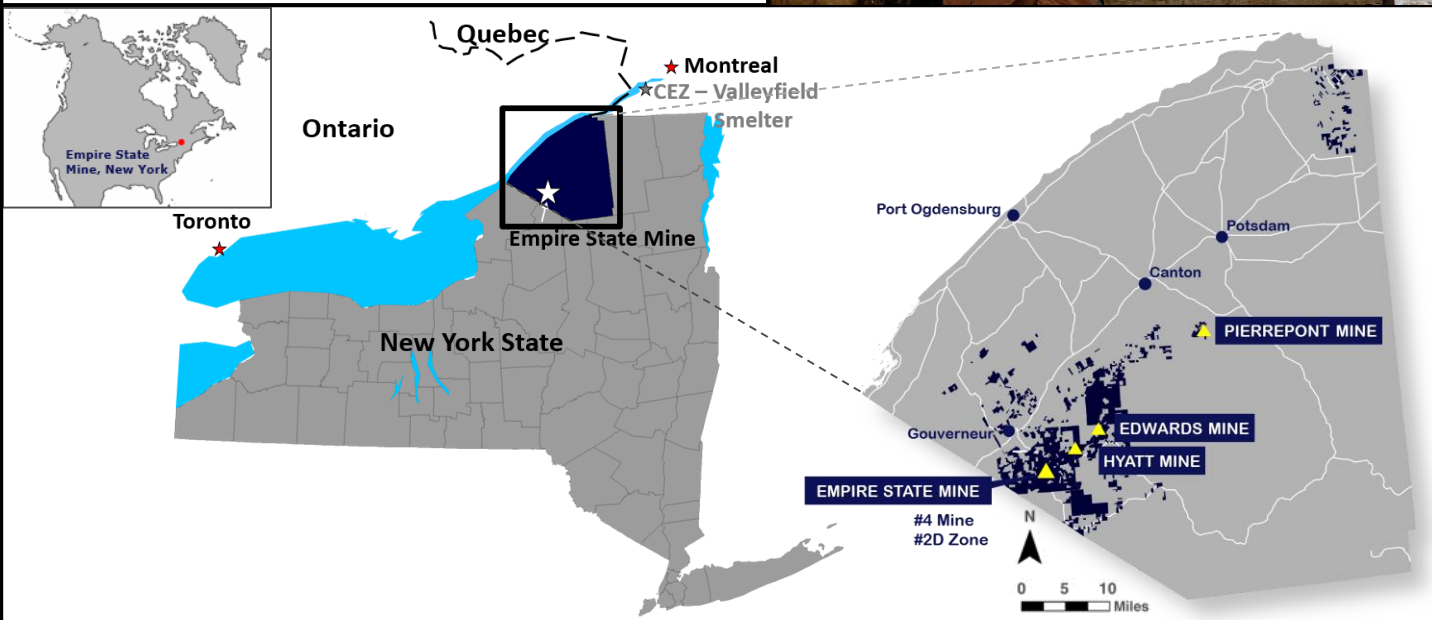
5,000 tpd mill



Large Land Package in Established Mining District

- ESM #4 mine and six historic mines
- Historic production 44 million tons milled at 9.4% zinc
- Long-term concentrate offtake agreement with Glencore – transportation within North America
- Titan controls >80,000 acres of mineral rights
- District remains underexplored, with potential for additional discoveries

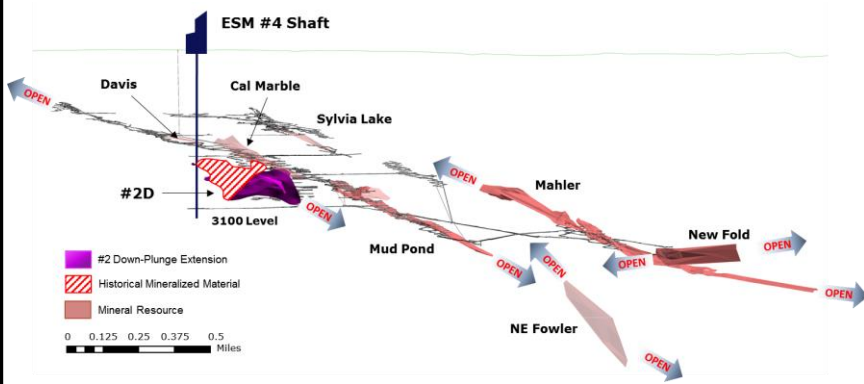
Exploration drilling



Toronto Stock Exchange Symbol	TI
Basic Shares Outstanding	123.0 million
Fully Diluted Shares Outstanding	145.2 million
Market Capitalization (as of 12/2/2019)	C\$36 million
Management/Directors Ownership	~58%

- Executive Chairman Richard Warke and the Augusta Group of companies have generated extraordinary shareholder value
- CEO Donald Taylor is recipient of PDAC’s 2018 Thayer Lindsley Award
- Board is experienced, well-rounded and connected. Key directors: John Boehner, Len Boggio, James Gowans, William Mulrow, George Pataki and Robert Wares.

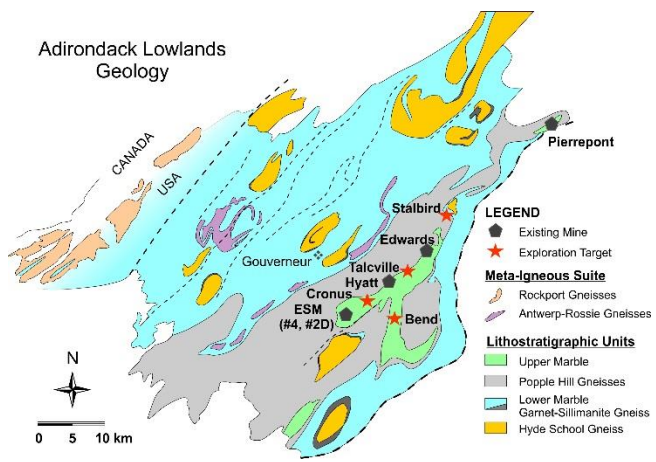
Mineral Resource Expansion Potential – Longitudinal View, #4 Mine and #2D Zone, Looking Northwest



Focus on Optimizing Cash Flow

- Production supported by current mineral resources with potential for near-mine resource additions
- New mine plan expected 2019, pending results of current drilling; to include higher-grade New Fold zone in ESM #4 mine and #2D zone (close to #4 shaft)
- Focus on development and exploration – infill drilling in #2D zone and #4 mine, drilling of near-mine open-pitiable mineralization as well as district drilling

New Ideas for a Prolific Zinc District – Exploration Targets Throughout District



World-Class Exploration Potential

- Highly prospective district – 100 years of historical data, many untested new ideas and a modern approach to exploration
- Potential for significant discoveries – targeting new discoveries in the 15 to 30 Mt range
- Target areas exhibit favourable host rocks, prospective structures and surface expressions of zinc mineralization
- Untested geophysical targets generated from 2008 VTEM survey
- Drill site selection from compilation and review of existing data

Disclaimer: This Fact Sheet includes forward-looking statements. These forward-looking statements are based on a number of assumptions which, while considered reasonable by Titan Mining, are subject to risks and uncertainties.